



Interactive Studio Quick Start Guide

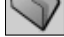
Creating an iPIX Image from Two Fisheye Hemisphere Source Images

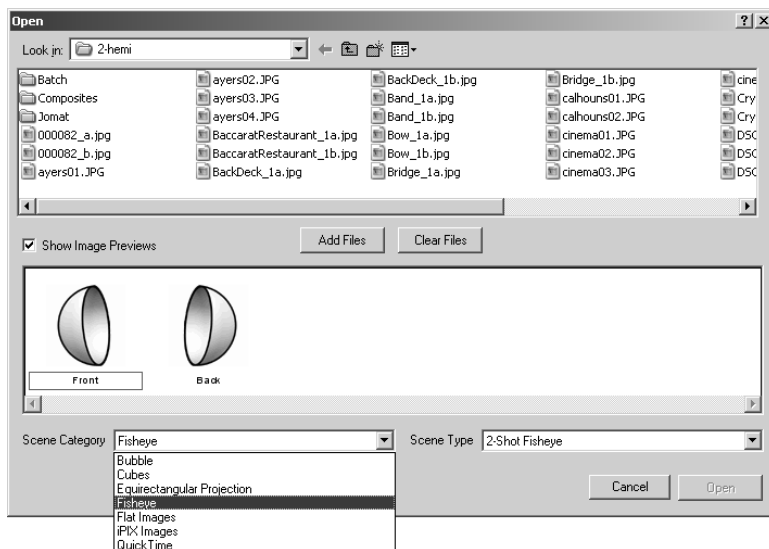
Launching the application

After installing the Interactive Studio Software, launch the application by selecting Interactive Studio in the Start Menu's Programs ..iPIX menu (Windows) or by double-clicking the application's icon in the Finder's Applications folder (Macintosh).

If you have not installed a license for the software, the application will run in evaluation mode. This will limit your output formats to 'iPIX Proof images' and will disable the 'Undo' command. 'Evaluation Mode' is displayed in the title bar of the application window if the program is not licensed.

Opening Source Images

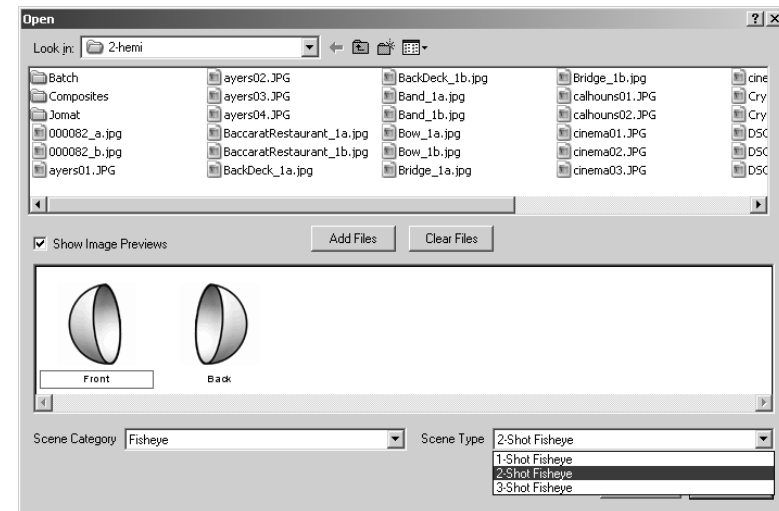
On the application toolbar, click the *Open* button , or choose 'Open' from the 'File' menu. In the 'Open' dialog box, the uppermost section allows you to browse to your selected source images. If you have not produced your own photographs, sample '2 shot' fisheye images are included in the 'Samples/2-hemi' folder. At the bottom of the 'Open' dialog box are two pull-down menus entitled 'Scene Category' and 'Scene Type'.



From the 'Scene Category' menu, choose 'Fisheye'. This identifies the projection of the source images.

Next, from the pull-down menu entitled 'Scene Type', choose '2-Shot Fisheye'. This tells the application to expect 2 images separated by 180 degrees of rotation.

If your source images have consecutive file names, double-click on a source image in the file navigation section of the *Open* dialog box.



The second image will be chosen automatically. Otherwise, select both images, in the file navigation section and click *Add Files*.

Use the image previews to confirm that you have chosen the correct image pair, and click on the *Open* button at the bottom of the *Open* dialog box.


Stitching Scenes from Source Images

Upon opening the source images, source image thumbnails will appear in the Scene Thumbnail Preview Pane. The Scene's name will appear in the Scene List, and can be expanded to show the individual source images. Clicking on a source image name will cause the image to be displayed in the Scene Preview Pane. If the application preferences have not been altered, stitching will begin immediately. The status bar will indicate stitching progress.



DVDInsert Back



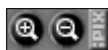
Click the *Auto Stitch* button  on the application toolbar to start the Stitching process if it does not begin automatically. Once Stitching is complete, you can click on a scene name and it will display the scene in the Scene Preview Pane. Scene names can be selected and edited at any time.

Navigating the Scene

Select a scene name from the Scene List and use the cursor to navigate the image by clicking inside the Scene Preview Pane:




Click and drag the cursor in direction you want the image to move; up, down, left or right.




Zoom into the image using the magnifier icons in the lower left corner of the Scene Preview Pane.

Setting an Initial Viewpoint

Navigate to the view you wish to see when the image is opened. Click the *Initial Viewpoint* button  on the application toolbar to see the options. In the 'Initial Viewpoint' dialog box, click on the *Use Current View* button to update the scene's pan, tilt, and zoom values. Click *OK* to set this property for the scene.

Adding a Tripod Cap




Use the *Tripod Cap* button  on the application toolbar to specify a graphic file that will be applied to the image to hide the photographer's tripod. Sample tripod cap files

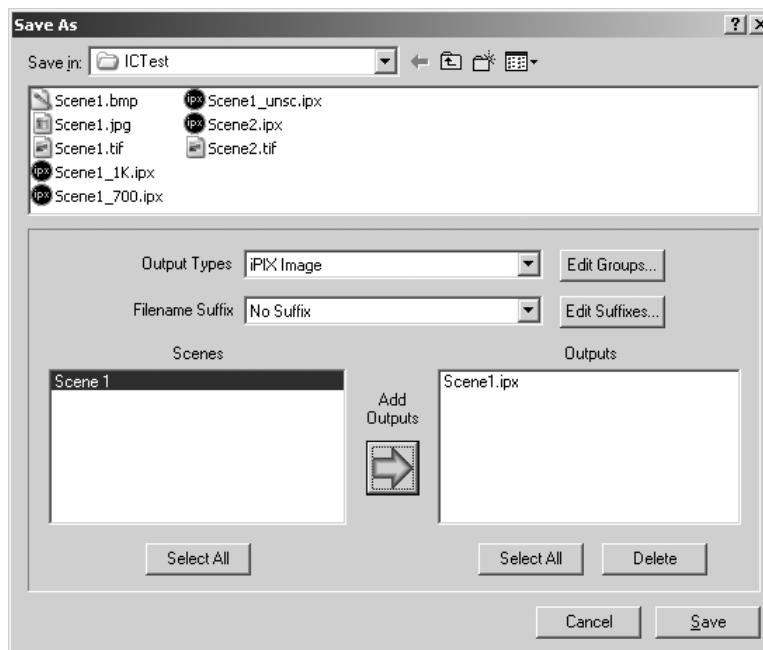
are provided in the Samples/caps/ directory, and are named according to the diameter of the cap in pixels. Use the image which best suits your camera/lens combination. Detailed instructions to create your own tripod caps are provided in the User Manual.


Adding Copyright Metadata



Click the *Copyright* button  on the application toolbar to add a title and a photographer name to the selected scene. This data will be carried forward with the iPIX image and can be accessed from the iPIX viewers and browser plug-ins at any time.

Saving an iPIX Image



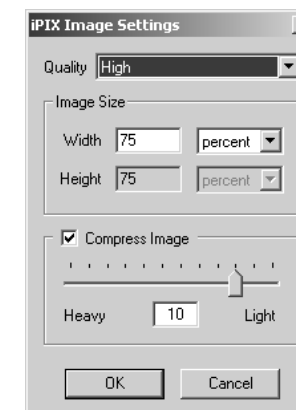
Click the *Save As* button  on the application toolbar, or choose 'Save As' from the File menu. Use the file navigation section at the top of the window to determine where on your computer the images will be saved.



Next, choose 'iPIX Image' from the pull-down menu labeled 'Output Type'. ('iPIX Proof image' for evaluation mode users). For details about the other available output types please refer to the User Manual. The stitched scene name will appear highlighted in the scene list. Click the blue arrow to add this scene to the output list. This will open the 'iPIX Image Settings' controls.



Next, set resolution and compression settings for your image by choosing a quality preset from the 'Quality' pull-down menu. Note that the Maximum quality setting is for archive images to be reopened in this program. Uncompressed archive images will not open in the iPIX stand-alone viewers or Web browser plug-ins. You may also set custom scaling and compression values manually using the controls in the lower part of the dialog box.



Contact Info:

Ph: 888.425.0048

E: technical_support@ipix.com

W: <http://infomedia.ipix.com>

